

from the library of
Ch. Floyd Scott

JOURNAL
OF THE
Tennessee Academy of Science

VOLUME XXV, NUMBER 4

CONTENTS

	PAGE
BIOGRAPHICAL SKETCH OF DOCTOR GEORGE R. MAYFIELD A. F. GANIER	245
NEWS OF TENNESSEE SCIENCE. C. S. SHOUP	247
THE TWENTY-FIFTH ANNIVERSARY OF THE JOURNAL OF THE TENNESSEE ACADEMY OF SCIENCE. JESSE M. SHAVER	248
NOVEL ASPECTS OF THE LIFE HISTORY OF TWO AM- BYSTOMAS. W. LESLIE BURGER	252
PROCEEDINGS OF THE TENNESSEE ACADEMY OF SCIENCE FOR 1949. W. ROGER RUSK	258
CONSTITUTION OF THE TENNESSEE ACADEMY OF SCIENCE	271
TENNESSEE FERNS OF THE WOODSIA GROUP. JESSE M. SHAVER	275
THE BARNARD ASTRONOMICAL CLUB OF NASHVILLE, TEN- NESSEE. CARL K. SEYFERT	287
THE HAYSCENTEDFERN IN TENNESSEE. JESSE M. SHAVER ..	288
A RESTUDY OF THE DERIVATIVE OF RATIONAL POWERS OF A FUNCTION. H. L. LEE	293
SOME OBSERVATIONS ON STENAMMA WESTWOOD (HY- MENOPTERA: FORMICIDAE). A. C. COLE	297
TALENT SEARCHES—STATE AND NATIONAL. J. L. MAJOR AND H. A. WEBB	298
SOME ROBBER FLIES FROM CAMPBELL COUNTY, TENNES- SEE. R. M. GOSLIN	303
THE TENNESSEE JUNIOR ACADEMY OF SCIENCE. FRANCES R. BOTTUM	307
ADDITIONAL RECORDS OF BOREUS BRUMALIS (MECOP- TERA: BOREIDAE) FROM TENNESSEE. R. M. GOSLIN	309
NOTES ON SALAMANDERS ASSOCIATED WITH DESMOG- NATHUS OCOEE NICHOLLS. J. C. NICHOLLS, JR.	310
INDEX FOR VOLUME XXV, 1950	315

OCTOBER, 1950

JOURNAL

of the
Tennessee Academy of Science

EDITORIAL STAFF

JESSE M. SHAVER, *Editor*, George Peabody College for Teachers, Nashville.
HARRY MONK, *Ornithology Editor*, Ovoca Apartments, Nashville.
L. C. GLENN, *Geology Editor*, Vanderbilt University, Nashville.
CHARLES S. SHOUP, *News Editor*, Vanderbilt University, Nashville.
M. L. MACQUEEN, *Mathematics Editor*, Southwestern, Memphis.
HAROLD C. BOLD, *Botany Editor*, Vanderbilt University, Nashville.

Entered as second class matter February 12, 1926, at the post office at Nashville, Tennessee, under Act of August 24, 1912, acceptance of mailing at special rate of postage provided for in Section 1103, Act of October 3, 1917, and authorized September 16, 1931.

Published quarterly, in January, April, July, and October, by the Tennessee Academy of Science at Nashville, Tennessee.

The Journal is sent to all members not in arrears for dues. The subscription price is \$2.00 a year, invariably in advance. Single copies 50c.

All articles and communications for publication, books and publications for review should be addressed to the Editor.

New subscriptions, changes of address, and applications for membership should be addressed to the Secretary. Personal items, news of events in the scientific world, and other notes suitable for our "News of Tennessee Science" department should be addressed to the News Editor.

THE TENNESSEE ACADEMY OF SCIENCE

(FOUNDED, 1912, AT NASHVILLE, TENNESSEE)

Affiliated with the American Association for the Advancement of Science

AFFILIATED SOCIETY

Tennessee Ornithological Society, Nashville, Tennessee.

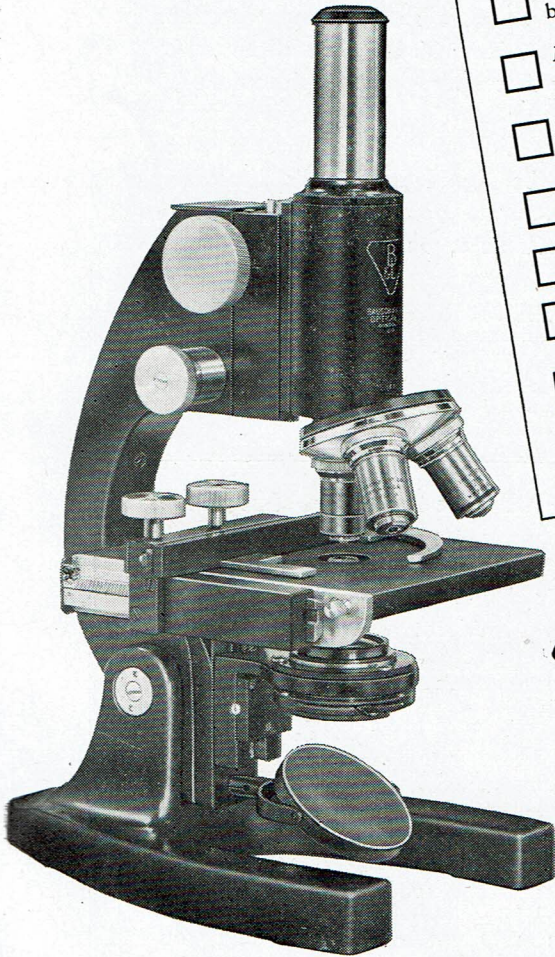
OFFICERS

S. L. MEYER, *President*, The University of Tennessee, Knoxville.
M. L. MACQUEEN, *Vice-President*, Southwestern College, Memphis.
JESSE M. SHAVER, *Editor*, George Peabody College for Teachers, Nashville.
ARLO I. SMITH, *Secretary*, Southwestern College, Memphis.
JAMES J. FRIAUF, *Treasurer*, Vanderbilt University, Nashville.

The Tennessee Academy of Science is very anxious to include in its membership all teachers and professors of science, research workers in science both in educational institutions and industrial establishments, and all others who are interested in some phase of science. We invite you to join our organization and take part in our activities. The annual dues are: \$3.00 for members and \$10.00 for sustaining members. They may be sent direct with your application for membership to the secretary.

Check

THE DIFFERENCE on this CHART



- Exclusive variable focus condenser
- Exclusive threadless cell lens mounts
- Exclusive nosepiece with roller bearing stops
- Exclusive bronze body tube dove-tail slide
- Exclusive patented lever fine adjustment
- Coarse adjustment with *matched* rack and pinion
- Substage with full 360° ring mount
- Integral Substage Illuminator (optional)
- Balcoted optical system (optional) to reduce reflections and flare
- Truly beautiful styling



See THE DIFFERENCE IN A DEMONSTRATION

Let *your own* test prove the smooth-as-silk racking, precise focusing and illumination control, world's finest optical system, and convenience of a new Bausch & Lomb Laboratory Microscope.

WRITE for complete information and demonstration to Bausch & Lomb Optical Co., 657V St. Paul St., Rochester 2, N. Y.

Bausch & Lomb *Laboratory* Microscopes

Geology

Mineralogy

Paleontology

Zoology

Botany

Entomology

Anatomy

Embryology

Parasitology

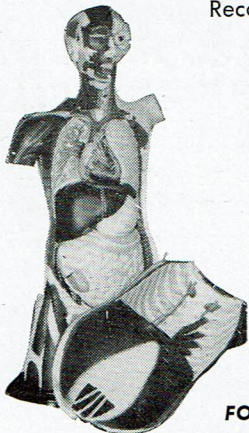
PLASTIC EMBEDDING

Teaching specimens for biology and mineralogy attain unmatched beauty, utility (as for microscopic examination), and durability when mounted in crystal-clear, lustrous blocks of Bio-Plastic. This method, introduced by Ward's in 1946, has been perfected to the point where *anyone*, without equipment or training, can process these superior aids for himself. Partial proof will be found in Ward's illustrated manual, "How to Embed in Bio-Plastic" —available at 25c.

WARD'S

NATURAL SCIENCE ESTABLISHMENT
3000 RIDGE ROAD EAST, ROCHESTER 9, N. Y.

Every High School in Tennessee Needs The D-G Torso and Head Model



Recognized and Recommended by Leading
Educators for the
Effective Teaching of

ANATOMY
PHYSIOLOGY
BIOLOGY
HEALTH AND HYGIENE
PHYSICAL EDUCATION

Start your fall classes with this indispensable teaching tool. Superior in accuracy, appearance and construction.

FOR COMPLETE SPECIFICATIONS WRITE TO
DENOYER-GEPPERT COMPANY
High Quality Models

5235 Ravenswood Ave.

Chicago 40, Illinois

CAROLINA CULTURES

A Dependable Culture Service

		Class of:	25	50	75	100
L1	Giant Amoeba proteus.....		\$2.00	\$3.50	\$4.75	\$6.00
(standard for study)						
L2	Paramecium multimicronucleatum	1.50	2.50	3.25	4.00	
(giant form; excellent for laboratory study)						
L220	Planaria maculata or dorotocephala.....	2.00	3.50	4.75	6.00	
(maculata, light colored species, is generally preferred)						

SAME PRICE AS AMOEBA:

P. caudatum	Stentor	Peranema	Spirostomum	Tardigrada	Actinosphaerium
P. aurelia	Vorticella	Volvox	Chlamydomonas	Pandorina	Mixed Protozoa
	Desmids		Hydra		Pelomyxa

SAME PRICE AS PARAMECIUM:

Euglena	Chilomonas	Euplotes	Copepods	Spirogyra	Elodea
Arcella	Centropyxis	Daphnia	Diatoms	Nitella	Rotifers
	Vinegar Eels			Oscillatoria	

To expedite handling at transfer points in transit all living cultures are shipped Special Delivery same day received, or according to customer's shipping schedule. The above prices include container. Postage and Special Delivery are charged to the customer.

For Drosophila cultures, Tenebrio or "Meal-worms," Aquarium Sets or Assortments, living Frogs, Turtles, Rats, Mice, etc., see our Catalogue number 18. Cultures of Bacteria and Fungi are also available.

We have a complete line of Preserved Specimens, Microscope Slides, Kodachromes, Dissecting Instruments, etc. Our publications—CAROLINA TIPS and Catalogue number 18—will be sent free upon application.

CAROLINA BIOLOGICAL SUPPLY COMPANY
ELON COLLEGE, NORTH CAROLINA

Unbreakable Rubber Models

for

Botany – Zoology – Human

Anatomy – Embryology

Write for the new catalog of Turtox Models

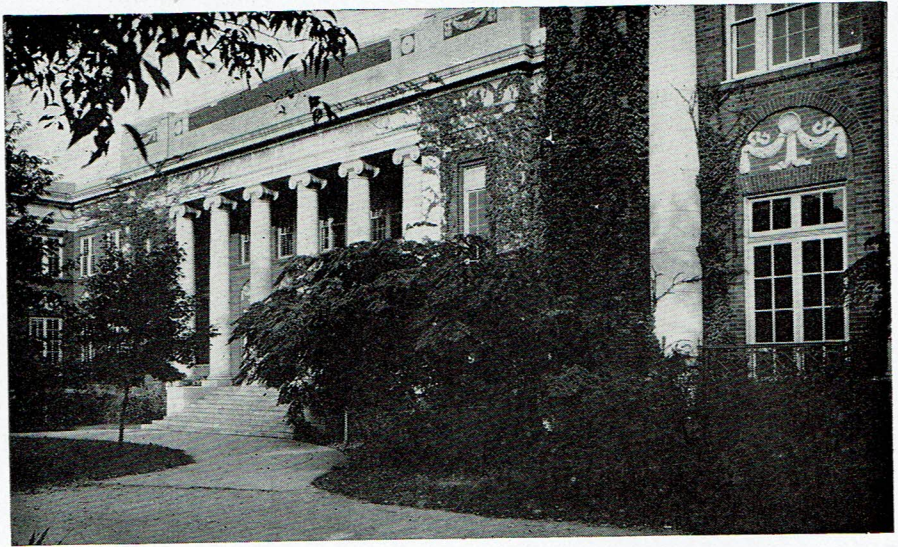
General Biological Supply House, Inc.

761-763 East 69th Place

Chicago 37, Illinois, U. S. A.

A SCIENCE CURRICULUM

ESPECIALLY ARRANGED FOR PREPARING TEACHERS OF SCIENCE. The prospective teacher may get a minimum of three years in one science (Biology or Chemistry), two years in a second science, and one year in the third science, with the courses in Psychology and Education required for a teaching certificate, including practice teaching in science.



Graduate work through the master's degree given in biology and chemistry in order to prepare teachers for the larger high schools or for teaching positions in small colleges.

Write for catalogue mentioning the field of your interest to

THE SECRETARY

**GEORGE PEABODY COLLEGE
FOR TEACHERS**

NASHVILLE 4, TENNESSEE