

*From the library of
A. Floyd Scott*

JOURNAL
OF THE
Tennessee Academy of Science

VOLUME XXXIII

No. 4

Biological Studies on the Armyworm,
Pseudaletia Unipuncta (Haworth),
in Tennessee (Lepidoptera: Noctuidae)

SAMUEL G. BREELAND

Some Climatic Relations of
Armyworm Outbreaks

S. MARCOVITCH



OCTOBER, 1958

JOURNAL OF THE Tennessee Academy of Science

EDITORIAL STAFF

JESSE M. SHAVER, *Editor Emeritus*, George Peabody College for Teachers, Nashville

HELEN L. WARD, *Editor*, University of Tennessee, Knoxville

CARL TABB BAHNER, *News Editor*, Carson-Newman College, Jefferson City

A. C. COLE, *Zoology Editor*, University of Tennessee, Knoxville

E. D. EAVES, *Mathematics Editor*, University of Tennessee, Knoxville

JAMES C. BROWN, *Engineering Editor*, Tennessee Polytechnic Institute, Cookeville

CARL M. HILL, *Chemistry Editor*, Tennessee A and I College, Nashville

DOUGLAS SHIELDS, *Physics-Astronomy Editor*, Middle Tennessee State College, Murfreesboro

W. B. JEWELL, *Geology-Geography Editor*, Vanderbilt University, Nashville

JOHN T. JOHNSON, *High School Editor*, Young High School, Knoxville

FREDERICK T. WOLF, *Botany Editor*, Vanderbilt University, Nashville

Entered as second class matter at the post office at Knoxville, Tennessee, under Act of August 24, 1912, acceptance of mailing at special rate of postage provided for in Section 1103, Act of October 3, 1917, and authorized September 16, 1931.

Published quarterly, in January, April, July, and October, by the Tennessee Academy of Science at Knoxville, Tennessee.

The Journal is sent to all members not in arrears for dues. The subscription price is \$3.00 a year, invariably in advance. Single copies 75c.

All articles and communications for publication, books and publications for review, should be addressed to the Editor.

New subscriptions, changes of address, and applications for membership should be addressed to the Secretary. Personal items, news of events in the scientific world, and other notes suitable for our "News of Tennessee Science" department should be addressed to the News Editor.

THE TENNESSEE ACADEMY OF SCIENCE

(Founded 1912, at Nashville, Tennessee)

Affiliated with the American Association for the Advancement of Science

AFFILIATED SOCIETIES

Tennessee Ornithological Society, Nashville, Tennessee

Barnard Astronomical Club, Nashville

Tennessee Science Teachers Association

Tennessee Psychological Association

OFFICERS

ARLO I. SMITH, *President*, Southwestern College, Memphis

ROBERT T. LAGEMANN, *President-Elect*, Vanderbilt University, Nashville

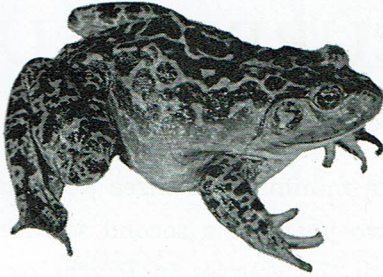
JESSE M. SHAVER, *Editor Emeritus*, George Peabody College for Teachers, Nashville

HELEN L. WARD, *Editor*, University of Tennessee, Knoxville

WENDELL G. HOLLADAY, *Secretary*, Vanderbilt University, Nashville

HARRIS J. DARK, *Treasurer*, Middle Tennessee State College, Murfreesboro

The Tennessee Academy of Science is very anxious to include in its membership all teachers and professors of science, research workers in science both in educational institutions and industrial establishments, and all others who are interested in some phase of science. We invite you to join our organization and take part in our activities. The annual dues are: \$3.00 for members and \$10.00 for sustaining members. They may be sent direct with your application for membership to the secretary.



**CAROLINA
PRESERVED
BULLFROGS**

		Each	12	50	100
P 1475	Giant. 7" average Plain	\$2.70	\$27.00	\$108.00	\$216.00
P 1476	Giant. Arteries injected	3.00	30.00	120.00	240.00
P 1477	Giant. Doubly injected	3.30	33.00	132.00	264.00
P 1477a	Giant. Triply injected.	3.75	37.50	150.00	300.00
P 1478	Large. 6" average. Plain	1.90	21.00	84.00	168.00
P 1479	Large. Arteries injected.	2.25	24.00	96.00	192.00
P 1480	Large. Doubly injected.	2.50	27.00	108.00	216.00
P 1481	Medium. 5" average. Plain	1.75	18.00	72.00	135.00
P 1482	Medium. Arteries injected.	1.90	21.00	84.00	168.00
P 1483	Medium. Doubly injected.	2.40	24.00	96.00	192.00
P 1485	Small. 4" average. Plain.	1.05	10.50	42.00	84.00
P 1486	Small. Arteries injected.	1.35	13.50	54.00	108.00
P 1487	Small. Doubly injected.	1.65	16.50	66.00	132.00

All prices are f.o.b. shipping point

Our Company maintains a large stock of biological materials of all kinds. We have grown steadily during the thirty-one years we have been in business. It is our belief that this growth has been due to our considering an order for our supplies a privilege and to the fact that our materials are the finest which can be obtained.

CAROLINA BIOLOGICAL SUPPLY COMPANY
Elon College, North Carolina

Turtox offers
four series of . . .

**Kodachrome Lantern Slides of Exhibits
of the Chicago Natural History Museum**

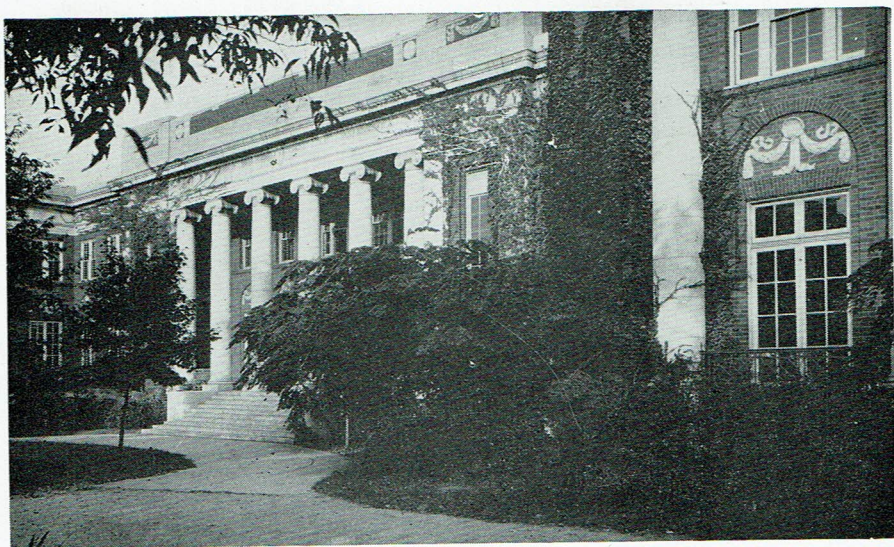
Did you receive the list of these outstanding slides?
If not, write now for your free copy of the illustrated 12-page price list of these famous museum exhibits. They are sold exclusively by Turtox.

GENERAL BIOLOGICAL SUPPLY HOUSE
Incorporated
8200 South Hoyne Avenue
Chicago 20, Illinois

A SCIENCE CURRICULUM

Especially Arranged For Preparing Teachers of Science

The prospective teacher may get a minimum of three years in one science (Biology or Chemistry), two years in a second science, and one year in the third science, with the courses in Psychology and Education required for a teaching certificate, including practice



teaching in science. Graduate work through the master's degree given in biology and chemistry in order to prepare teachers for the larger high schools or for teaching positions in small colleges.

Write for catalogue mentioning the field of your interest to

THE SECRETARY
**GEORGE PEABODY COLLEGE
FOR TEACHERS**

NASHVILLE 5, TENNESSEE