

From the library of
Ch. Floyd Scott

JOURNAL
OF THE
Tennessee Academy of Science

VOLUME XXXIV

NUMBER 1

CONTENTS

	PAGE
MAP OF REELFOOT LAKE	
Report of the Director of the Reelfoot Lake Biological Station — C. L. Baker	1
<i>Peronospora parasitica</i> on <i>Leavenworthia</i> Frederick T. Wolf	3
News of Tennessee Science	2
New Cave Beetles (<i>Carabidae</i> , <i>Trechini</i>) from Tennessee and Kentucky Thomas C. Barr, Jr.	5
✓ <i>Trillium sessile</i> L. in Tennessee. Jesse M. Shaver	31
Heterophyllous Leaves in the Palmately Lobed <i>Viola egglestonii</i> Brainerd, Jesse M. Shaver	40
An Occurrence of <i>Wapiti</i> (<i>Cervus</i> cf. <i>C.</i> <i>canadensis</i>), Possibly of Pleistocene Age, in North-Central Dyer County, Tennessee M. V. Marcher	47
Achondroplastic Dwarfs in Cattle. Wm. G. Downs, Jr.	52
Checklist of Vascular Aquatic Plants of Tennessee. Franklin D. Robinson and Royal E. Shanks	58
A New Map of the Central Basin of Tennessee. H. R. DeSelm	66
Age and Rate of Growth of the Bluegills in Reelfoot Lake, Tennessee, for 1950 and 1958. Robert J. Schoffman, C. S. V.	73
Hematological Values from Heart and Tail Vein of the Golden Hamster. William L. Mengebier and Beverly Pleasants	78

JANUARY, 1959

JOURNAL OF THE Tennessee Academy of Science

EDITORIAL STAFF

JESSE M. SHAVER, *Editor Emeritus*, George Peabody College for Teachers, Nashville

HELEN L. WARD, *Editor*, University of Tennessee, Knoxville

A. C. COLE, *Zoology Editor*, University of Tennessee, Knoxville

E. D. EAVES, *Mathematics Editor*, University of Tennessee, Knoxville

JAMES C. BROWN, *Engineering Editor*, Tennessee Polytechnic Institute, Cookeville

CARL M. HILL, *Chemistry Editor*, Tennessee A and I College, Nashville

DOUGLAS SHIELDS, *Physics-Astronomy Editor*, Middle Tennessee State College, Murfreesboro

W. B. JEWELL, *Geology-Geography Editor*, Vanderbilt University, Nashville

JOHN T. JOHNSON, *High School Editor*, Young High School, Knoxville

FREDERICK T. WOLF, *Botany Editor*, Vanderbilt University, Nashville

Entered as second class matter at the post office at Knoxville, Tennessee, under Act of August 24, 1912, acceptance of mailing at special rate of postage provided for in Section 1103, Act of October 3, 1917, and authorized September 16, 1931.

Published quarterly, in January, April, July, and October, by the Tennessee Academy of Science at Knoxville, Tennessee.

The Journal is sent to all members not in arrears for dues. The subscription price is \$3.00 a year, invariably in advance. Single copies 75c.

All articles and communications for publication, books, and publications for review, should be addressed to the Editor.

New subscriptions, changes of address, and applications for membership should be addressed to the Secretary. Personal items, news of events in the scientific world, and other notes suitable for our "News of Tennessee Science" department should be addressed to the Editor.

THE TENNESSEE ACADEMY OF SCIENCE

(Founded 1912, at Nashville, Tennessee)

Affiliated with the American Association for the Advancement of Science

AFFILIATED SOCIETIES

Tennessee Ornithological Society, Nashville, Tennessee

Barnard Astronomical Club, Nashville

Tennessee Science Teachers Association

Tennessee Psychological Association

OFFICERS

ROBERT T. LAGEMANN, *President*, Vanderbilt University, Nashville

CHRISTOPHER P. KEIM, *President-Elect*, Oak Ridge National Laboratory, Oak Ridge

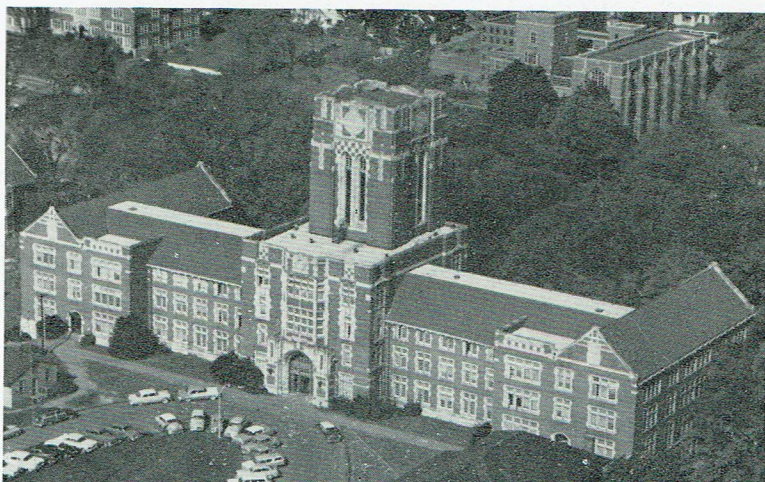
JESSE M. SHAVER, *Editor Emeritus*, George Peabody College for Teachers,

HELEN L. WARD, *Editor*, University of Tennessee, Knoxville

WENDELL G. HOLLADAY, *Secretary*, Vanderbilt University, Nashville

G. H. LUNDBERG, *Treasurer*, Vanderbilt University, Nashville

The Tennessee Academy of Science is very anxious to include in its membership all teachers and professors of science, research workers in science both in educational institutions and industrial establishments, and all others who are interested in some phase of science. We invite you to join our organization and take part in our activities. The annual dues are: \$3.00 for members and \$10.00 for sustaining members. They may be sent direct with your application for membership to the secretary.



The University of Tennessee's Knoxville Campus

**Opportunities for Study and Research in Science at
THE UNIVERSITY OF TENNESSEE
SUMMER QUARTER, 1959**

Study Toward Bachelor's and Master's Degrees in

Agriculture • Bacteriology • Botany
Chemistry • Education • Engineering
Entomology • Geography • Geology
Home Economics • Mathematics • Physics
Psychology • Zoology

Study Toward Doctor of Philosophy Degree in

Bacteriology • Botany • Chemical Engineering
Chemistry • Entomology • Geology • Physics
Mathematics • Psychology • Zoology

Study Toward Doctor of Education Degree in

Educational Administration and Supervision,
Curriculum and Instruction, and Home
Economics Education

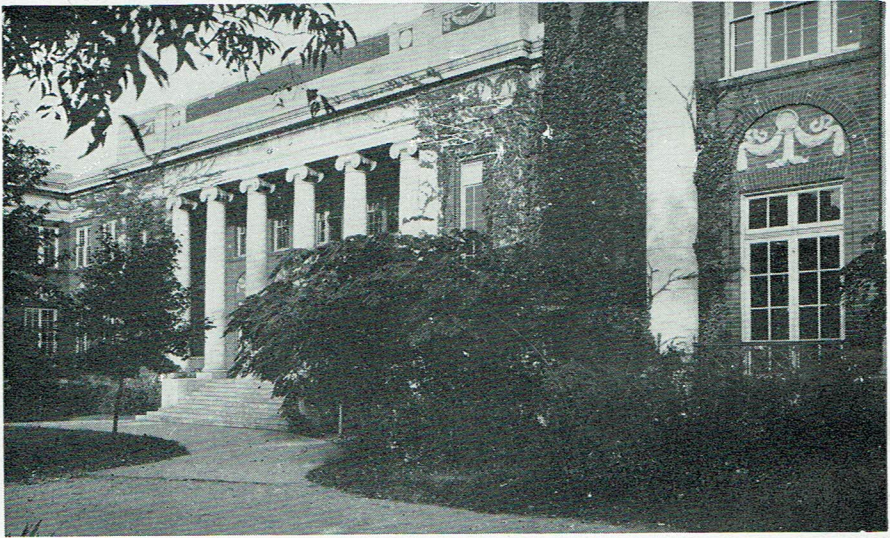
For Catalog, Admission Information, write:

**Dean of Admissions
The University of Tennessee
Knoxville, Tennessee**

A SCIENCE CURRICULUM

Especially Arranged For Preparing Teachers of Science

The prospective teacher may get a minimum of three years in one science (Biology or Chemistry), two years in a second science, and one year in the third science, with the courses in Psychology and Education required for a teaching certificate, including practice



teaching in science. Graduate work through the master's degree given in biology and chemistry in order to prepare teachers for the larger high schools or for teaching positions in small colleges.

Write for catalogue mentioning the field of your interest to

THE SECRETARY
**GEORGE PEABODY COLLEGE
FOR TEACHERS**

NASHVILLE 5, TENNESSEE