

From the Library of  
A. Floyd Scott

JOURNAL  
OF THE  
Tennessee Academy of Science

VOLUME XXXIV

NUMBER 3

CONTENTS

	PAGE
In Memoriam: Frances Ranney Bottum (1890-1958). Arthur H. Cook .....	147
HIGH SCHOOL SCIENCE SECTION .....	148
Fourteenth Tennessee Science Talent Search. Hanor A. Webb and James L. Major .....	148
Stress—Basic Origin of Disease. Barbara Conway .....	151
Experimental Teratology. Barbara Conway .....	154
Announcement. Tenth Annual Fisk University Spectroscopy Institute .....	157
News of Tennessee Science .....	158
<i>Pisciamphistoma reynoldsi</i> (Paramphistomidae) A New Trematode Parasite of <i>Lepomis</i> spp. in Virginia. Burton J. Bogitsh and Thomas C. Cheng .....	159
Southeastern Agaricales, III. L. R. Hesler .....	162
Southeastern Agaricales, IV. L. R. Hesler .....	167
Fish Management on Wood's Reservoir. Norman G. Benson .....	172
The Changing Agricultural Scene on the Cumberland Plateau. George W. Webb .....	189
COLLEGIATE DIVISION	
Studies of Genetic Factors in Homeostasis. Allen Ashburn and David Fitzpatrick .....	198
"Crawfish With Rocks in Their Heads." H. Bernie Orr .....	199
Operation of Genetic Factors in Growth and Development of Mice. Mel Bowling .....	199
The Effect of Cold Stress on Peripheral Leucocyte Count in Dwarf-carrier Mice. John B. Werner, Jr. ....	200
Factors in Addition to Experimental "Stress Agents" Influencing the Leucocyte-count in Albino Rats. Howard Klausner .....	201
Research Grants for Undergraduate Students .....	203

JULY, 1959



# JOURNAL OF THE Tennessee Academy of Science

## EDITORIAL STAFF

JESSE M. SHAVER, *Editor Emeritus*, George Peabody College for Teachers, Nashville

HELEN L. WARD, *Editor*, University of Tennessee, Knoxville

A. C. COLE, *Zoology Editor*, University of Tennessee, Knoxville

E. D. EAVES, *Mathematics Editor*, University of Tennessee, Knoxville

JAMES C. BROWN, *Engineering Editor*, Tennessee Polytechnic Institute, Cookeville

CARL M. HILL, *Chemistry Editor*, Tennessee A and I College, Nashville

DOUGLAS SHIELDS, *Physics-Astronomy Editor*, Middle Tennessee State College, Murfreesboro

W. B. JEWELL, *Geology-Geography Editor*, Vanderbilt University, Nashville

JOHN T. JOHNSON, *High School Editor*, Young High School, Knoxville

FREDERICK T. WOLF, *Botany Editor*, Vanderbilt University, Nashville

---

Entered as second class matter at the post office at Knoxville, Tennessee, under Act of August 24, 1912, acceptance of mailing at special rate of postage provided for in Section 1103, Act of October 3, 1917, and authorized September 16, 1931.

Published quarterly, in January, April, July, and October, by the Tennessee Academy of Science at Knoxville, Tennessee.

The Journal is sent to all members not in arrears for dues. The subscription price is \$3.00 a year, invariably in advance. Single copies 75c.

All articles and communications for publication, books, and publications for review, should be addressed to the Editor.

New subscriptions, changes of address, and applications for membership should be addressed to the Secretary. Personal items, news of events in the scientific world, and other notes suitable for our "News of Tennessee Science" department should be addressed to the Editor.

---

## THE TENNESSEE ACADEMY OF SCIENCE

(Founded 1912, at Nashville, Tennessee)

Affiliated with the American Association for the Advancement of Science

### AFFILIATED SOCIETIES

Tennessee Ornithological Society, Nashville, Tennessee

Barnard Astronomical Club, Nashville

Tennessee Science Teachers Association

Tennessee Psychological Association

### OFFICERS

ROBERT T. LAGEMANN, *President*, Vanderbilt University, Nashville

CHRISTOPHER P. KEIM, *President-Elect*, Oak Ridge National Laboratory, Oak Ridge

JESSE M. SHAVER, *Editor Emeritus*, George Peabody College for Teachers,

HELEN L. WARD, *Editor*, University of Tennessee, Knoxville

WENDELL G. HOLLADAY, *Secretary*, Vanderbilt University, Nashville

G. H. LUNDBERG, *Treasurer*, Vanderbilt University, Nashville

---

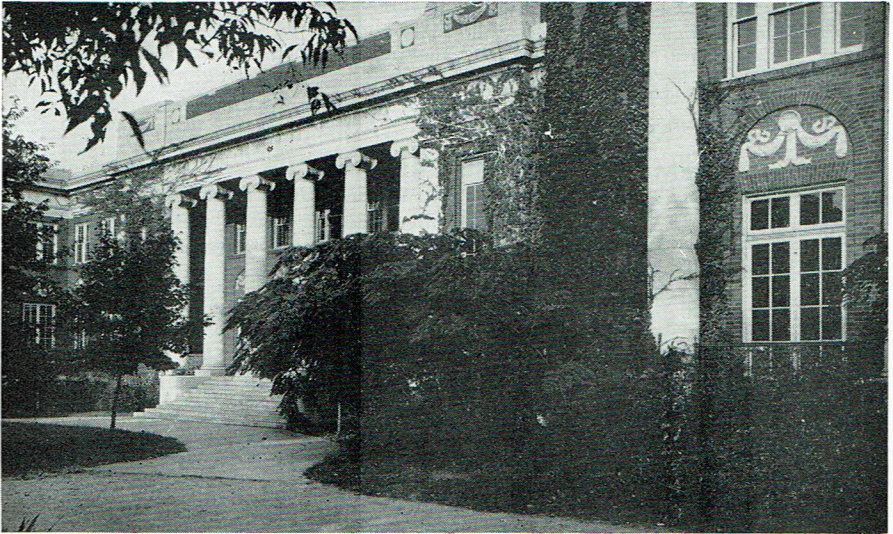
The Tennessee Academy of Science is very anxious to include in its membership all teachers and professors of science, research workers in science both in educational institutions and industrial establishments, and all others who are interested in some phase of science. We invite you to join our organization and take part in our activities. The annual dues are: \$3.00 for members and \$10.00 for sustaining members. They may be sent direct with your application for membership to the secretary.



# A SCIENCE CURRICULUM

**Especially Arranged For Preparing Teachers of Science**

The prospective teacher may get a minimum of three years in one science (Biology or Chemistry), two years in a second science, and one year in the third science, with the courses in Psychology and Education required for a teaching certificate, including practice



teaching in science. Graduate work through the master's degree given in biology and chemistry in order to prepare teachers for the larger high schools or for teaching positions in small colleges.

*Write for catalogue mentioning the field of your interest to*

THE SECRETARY  
**GEORGE PEABODY COLLEGE  
FOR TEACHERS**

NASHVILLE 5, TENNESSEE

# Books in

- Biology
- Chemistry
- Geography
- Zoology

## **GENERAL BIOLOGY LABORATORY MANUAL**

by Julian Porch Cooke, San Antonio College

Designed as both a teaching and learning aid for a 2 semester general biology course, this manual's thorough coverage reduces need for supplementary books.

Copyright 1959; 8½ x 11" size; 192 pages; photo offset; spiral bound; illustrated. \$3.50

## **CHEMISTRY IN THE LABORATORY**

by J. E. Taylor and John R. Demuth, Univ. of Nebraska

A triple approach to qualitative analysis and a section of investigative experiments make this manual interesting and challenging to the student.

Copyright 1959; 8½ x 11" size; 249 pages; photo offset; spiral bound; illustrated. \$3.75

## **A WORKBOOK FOR BEGINNING PHYSICAL GEOGRAPHY**

by Alfred W. Booth and C. S. Alexander, Univ. of Illinois

This workbook adds interest to any beginning Physical Geography text. U.S.G.S. maps, air photos, and line drawings make material more graphic.

Copyright 1958; 8½ x 11" size; 60 pages; photo offset; spiral bound. \$3.00

## **LABORATORY MANUAL FOR GENERAL ZOOLOGY (INVERTEBRATE)**

by Chauncy G. Goodchild, Emory University

This manual gives the beginning student an opportunity to learn the general plan of body structures, function, and development.

Copyright 1957; 8½ x 11" size; 71 pages plus worksheets; spiral bound; illustrated. \$2.00

---

Send us your order — or write for information on other books in this series. We pay postage when remittance accompanies order.

## **Burgess Publishing Company**

426 South Sixth Street — Minneapolis 15, Minn.