

From the library of
A. Floyd Scott

JOURNAL
OF THE
Tennessee Academy of Science

VOLUME XXXIV

NUMBER 4

CONTENTS

	PAGE
Announcement of Academy Meetings	205
Response of Achondroplastic Dwarfs to Insulin. William G. Downs, Jr. and Bryant Benson	206
The Larva of <i>Paramyrmica</i> (Hymenoptera:Formicidae). George C. Wheeler and Jeanette Wheeler	219
A New Crayfish of the Genus <i>Cambarus</i> from Alabama (Decapoda:Asticidae). Edward Taylor, Jr.	221
News of Tennessee Science	225
The <i>Drosophila</i> of Sullivan County, Tennessee. Richard Stevenson and T. M. Carter	226
Some Cavernicolous Millipeds from the Cumberland Plateau. Nell B. Causey	229
Four new Species of Water Mites of the genus <i>Arrenurus</i> from Middle Tennessee (Acarina:Hydracarina). James L. Wilson	238
Natural History Notes on the Goldenrod Ball Gall Fly, <i>Eurosta solidaginis</i> (Fitch), and its Parasites, <i>Eurytoma obtusiventris</i> Gahan and <i>E.</i> <i>gigantea</i> Walsh. William E. Miller	246
Index to Volume XXXIV	253

OCTOBER, 1959

JOURNAL OF THE Tennessee Academy of Science

EDITORIAL STAFF

- JESSE M. SHAVER, *Editor Emeritus*, George Peabody College for Teachers, Nashville
HELEN L. WARD, *Editor*, University of Tennessee, Knoxville
A. C. COLE, *Zoology Editor*, University of Tennessee, Knoxville
E. D. EAVES, *Mathematics Editor*, University of Tennessee, Knoxville
JAMES C. BROWN, *Engineering Editor*, Tennessee Polytechnic Institute, Cookeville
CARL M. HILL, *Chemistry Editor*, Tennessee A and I College, Nashville
DOUGLAS SHIELDS, *Physics-Astronomy Editor*, Middle Tennessee State College, Murfreesboro
W. B. JEWELL, *Geology-Geography Editor*, Vanderbilt University, Nashville
JOHN T. JOHNSON, *High School Editor*, Young High School, Knoxville
FREDERICK T. WOLF, *Botany Editor*, Vanderbilt University, Nashville
-
-

Entered as second class matter at the post office at Knoxville, Tennessee, under Act of August 24, 1912, acceptance of mailing at special rate of postage provided for in Section 1103, Act of October 3, 1917, and authorized September 16, 1931.

Published quarterly, in January, April, July, and October, by the Tennessee Academy of Science at Knoxville, Tennessee.

The Journal is sent to all members not in arrears for dues. The subscription price is \$3.00 a year, invariably in advance. Single copies 75c.

All articles and communications for publication, books, and publications for review, should be addressed to the Editor.

New subscriptions, changes of address, and applications for membership should be addressed to the Secretary. Personal items, news of events in the scientific world, and other notes suitable for our "News of Tennessee Science" department should be addressed to the Editor.

THE TENNESSEE ACADEMY OF SCIENCE

(Founded 1912, at Nashville, Tennessee)

Affiliated with the American Association for the Advancement of Science

AFFILIATED SOCIETIES

- Tennessee Ornithological Society, Nashville, Tennessee
Barnard Astronomical Club, Nashville
Tennessee Science Teachers Association
Tennessee Psychological Association

OFFICERS

- ROBERT T. LAGEMANN, *President*, Vanderbilt University, Nashville
CHRISTOPHER P. KEIM, *President-Elect*, Oak Ridge National Laboratory, Oak Ridge
JESSE M. SHAVER, *Editor Emeritus*, George Peabody College for Teachers, Nashville
HELEN L. WARD, *Editor*, University of Tennessee, Knoxville
JAMES L. WILSON, *Secretary*, Belmont College, Nashville
G. H. LUNDBERG, *Treasurer*, Vanderbilt University, Nashville
-
-

The Tennessee Academy of Science is very anxious to include in its membership all teachers and professors of science, research workers in science both in educational institutions and industrial establishments, and all others who are interested in some phase of science. We invite you to join our organization and take part in our activities. The annual dues are: \$3.00 for members and \$10.00 for sustaining members. They may be sent direct with your application for membership to the secretary.

YOUR SCIENCE FAIR

a new book by: **Arden F. Welte**
James Dimond
Alfred Friedl

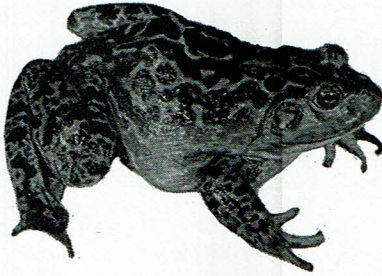
"Your Science Fair is a handbook designed to assist educators and public minded citizens to inaugurate and promote the science fair movement."

In recent years the percentage of total collegiate population entering the fields of science and engineering has declined. This drop is even more evident in high schools. The authors believe that the promotion of science fairs around the country will re-establish and stimulate the student's interest in science and encourage the use and understanding of the scientific method. This book includes many illustrations of organizational charts and student exhibits and is an excellent guide for the promotion of a successful science fair.

Copyright 1959; 8½ x 11" size; about 100 pages; photo offset; spiral bound; illustrated; \$2.75

Send us your order . . .
or write for more information.

Burgess Publishing Company
426 South Sixth Street — Minneapolis 15, Minn.



**CAROLINA
PRESERVED
BULLFROGS**

		Each	12	50	100
P 1475	Giant. 7" average Plain	\$2.70	\$27.00	\$108.00	\$216.00
P 1476	Giant. Arteries injected	3.00	30.00	120.00	240.00
P 1477	Giant. Doubly injected	3.30	33.00	132.00	264.00
P 1477a	Giant. Triply injected.	3.75	37.50	150.00	300.00
P 1478	Large. 6" average. Plain	1.90	21.00	84.00	168.00
P 1479	Large. Arteries injected.	2.25	24.00	96.00	192.00
P 1480	Large. Doubly injected.	2.50	27.00	108.00	216.00
P 1481	Medium. 5" average. Plain	1.75	18.00	72.00	135.00
P 1482	Medium. Arteries injected.	1.90	21.00	84.00	168.00
P 1483	Medium. Doubly injected.	2.40	24.00	96.00	192.00
P 1485	Small. 4" average. Plain.	1.05	10.50	42.00	84.00
P 1486	Small. Arteries injected.	1.35	13.50	54.00	108.00
P 1487	Small. Doubly injected.	1.65	16.50	66.00	132.00

All prices are f.o.b. shipping point

Our Company maintains a large stock of biological materials of all kinds. We have grown steadily during the thirty-one years we have been in business. It is our belief that this growth has been due to our considering an order for our supplies a privilege and to the fact that our materials are the finest which can be obtained.

CAROLINA BIOLOGICAL SUPPLY COMPANY
Elon College, North Carolina

Turtox

offers a selection of more than

350 Biological Charts

Write for your free copy of the new edition of the handy 3-way checklist of charts, key cards and quiz sheets.



GENERAL BIOLOGICAL SUPPLY HOUSE

Incorporated

8200 South Hoyne Avenue
CHICAGO 20, ILLINOIS

The Sign of the Turtox Pledges Absolute Satisfaction