

**CAROLINA
PRESERVED
BULLFROGS**

		Each	12	50	100
P 1475	Giant. 7" average Plain	\$2.70	\$27.00	\$108.00	\$216.00
P 1476	Giant. Arteries injected	3.00	30.00	120.00	240.00
P 1477	Giant. Doubly injected	3.30	33.00	132.00	264.00
P 1477a	Giant. Triply injected.	3.75	37.50	150.00	300.00
P 1478	Large. 6" average. Plain	1.90	21.00	84.00	168.00
P 1479	Large. Arteries injected.	2.25	24.00	96.00	192.00
P 1480	Large. Doubly injected.	2.50	27.00	108.00	216.00
P 1481	Medium. 5" average. Plain	1.75	18.00	72.00	135.00
P 1482	Medium. Arteries injected.	1.90	21.00	84.00	168.00
P 1483	Medium. Doubly injected.	2.40	24.00	96.00	192.00
P 1485	Small. 4" average. Plain.	1.05	10.50	42.00	84.00
P 1486	Small. Arteries injected.	1.35	13.50	54.00	108.00
P 1487	Small. Doubly injected.	1.65	16.50	66.00	132.00

All prices are f.o.b. shipping point

Our Company maintains a large stock of biological materials of all kinds. We have grown steadily during the thirty-one years we have been in business. It is our belief that this growth has been due to our considering an order for our supplies a privilege and to the fact that our materials are the finest which can be obtained.

CAROLINA BIOLOGICAL SUPPLY COMPANY
Elon College, North Carolina

Turtox

offers a selection of more than

350 Biological Charts

Write for your free copy of the new edition of the handy 3-way checklist of charts, key cards and quiz sheets.



GENERAL BIOLOGICAL SUPPLY HOUSE

Incorporated

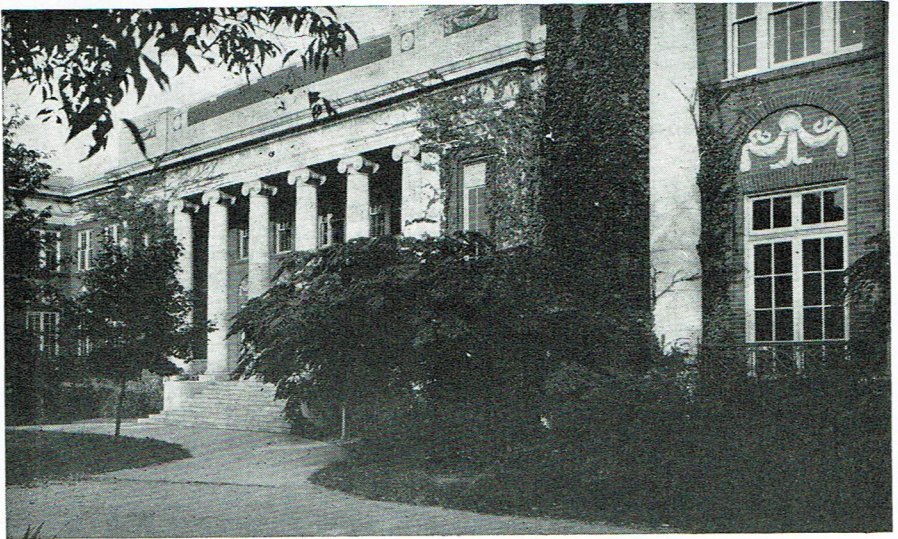
8200 South Hoyne Avenue
CHICAGO 20, ILLINOIS

The Sign of the Turtox Pledges Absolute Satisfaction

A SCIENCE CURRICULUM

Especially Arranged For Preparing Teachers of Science

The prospective teacher may get a minimum of three years in one science (Biology or Chemistry), two years in a second science, and one year in the third science, with the courses in Psychology and Education required for a teaching certificate, including practice



teaching in science. Graduate work through the master's degree given in biology and chemistry in order to prepare teachers for the larger high schools or for teaching positions in small colleges.

Write for catalogue mentioning the field of your interest to

THE SECRETARY
**GEORGE PEABODY COLLEGE
FOR TEACHERS**

NASHVILLE 5, TENNESSEE

NOTICE TO AUTHORS

Papers submitted for publication in the *Journal* may be sent to any member of the editorial staff. Manuscripts should be typewritten, double or triple spaced, with wide margins, and with legends for figures typed on a separate page. Recent issues should be consulted with regard to matters of style. Each table should be placed on a separate sheet. Footnotes should not be used except very rarely. Greek letters and symbols should be avoided as much as possible.

The style for the list of references should conform to the style used in recent issues of the *Journal*. This list should be headed Literature Cited. The following example illustrates the proper style to be used for references:

Snow, W. E. and Eugene Pickard. 1954. Observations on the seasonal activity of some night-biting Diptera. *J. Tenn. Acad. Sci.* 29: 17-22.

Photographs (black and white glossy prints) may be accepted as illustrations; however, line drawings and diagrams are preferable. Drawings should be made in India ink on white paper or Bristol Board. An article containing more than 2 or 3 illustrations can be published only with the financial cooperation of the author.

A blank form for ordering reprints from the printer is enclosed with the galley proof. The cost of reprints is as follows:

	2 pages	4 pages	8 pages	12 pages	16 pages
100 copies -----	\$8.00	\$10.00	\$19.00	\$28.00	\$37.00
Each additional 100-----	1.50	2.00	4.00	6.00	8.00

Hubert E. Hodge Printing Co.

*Stationery — Office Forms — Programs — Publications
Bookkeeping Machine Forms — Announcements*

*Engraved Wedding Invitations and
Announcements, Engraved Stationery,
Calling Cards and Business Cards*

Telephone 4-9881 — 1800-1802 Grand Ave.
KNOXVILLE 1, TENNESSEE

YOU CAN DEPEND ON WARD'S
FOR

**Professional Quality
Reliable Service**

*Serving the Biological and
Geological Sciences with*

**SPECIMENS EQUIPMENT
TEACHING AIDS**

Living and Preserved Materials, Mineral Collections, Microscope Slides, Models, Biology and Geology Field and Laboratory Equipment, Color Slides for Both Sciences, Charts, Human and Animal Skeletons, Fossils, Bio-Plastic Mounts and Liquid Bio-Plastic.

*Write on your school letterhead for
free catalog. Specify field of interest.*

**WARD'S NATURAL SCIENCE ESTABLISHMENT, Inc.
P. O. Box 24, Beechwood Station, Rochester 9, N. Y.**

**LABORATORY SUPPLIES ● MICROSCOPES
AND ACCESSORIES ● DISSECTING
INSTRUMENTS ● CHEMICALS
REAGENTS AND SOLUTIONS**

Distributors for Clay-Adams, Bausch & Lomb and
other Importers and Manufacturers

**NASHVILLE SURGICAL
SUPPLY COMPANY**

**1911 Church Street
NASHVILLE 3, TENNESSEE**