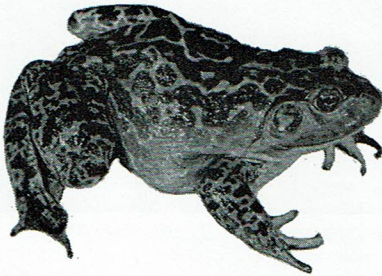


# Hubert E. Hodge Printing Co.

*Stationery — Office Forms — Programs — Publications  
Bookkeeping Machine Forms — Announcements*

*Engraved Wedding Invitations  
Announcements, Engraved Stationery,  
Calling Cards and Business Cards*

Telephone 4-9881 — 1800-1802 Grand Ave.  
KNOXVILLE 1, TENNESSEE



## CAROLINA PRESERVED BULLFROGS

	Each	12	50	100
P 1475 Giant. 7" average Plain	\$2.70	\$27.00	\$108.00	\$216.00
P 1476 Giant. Arteries injected	3.00	30.00	120.00	240.00
P 1477 Giant. Doubly injected	3.30	33.00	132.00	264.00
P 1477a Giant. Triply injected.	3.75	37.50	150.00	300.00
P 1478 Large. 6" average. Plain	1.90	21.00	84.00	168.00
P 1479 Large. Arteries injected.	2.25	24.00	96.00	192.00
P 1480 Large. Doubly injected.	2.50	27.00	108.00	216.00
P 1481 Medium. 5" average. Plain	1.75	18.00	72.00	135.00
P 1482 Medium. Arteries injected.	1.90	21.00	84.00	168.00
P 1483 Medium. Doubly injected.	2.40	24.00	96.00	192.00
P 1485 Small. 4" average. Plain.	1.05	10.50	42.00	84.00
P 1486 Small. Arteries injected.	1.35	13.50	54.00	108.00
P 1487 Small. Doubly injected.	1.65	16.50	66.00	132.00

All prices are f.o.b. shipping point

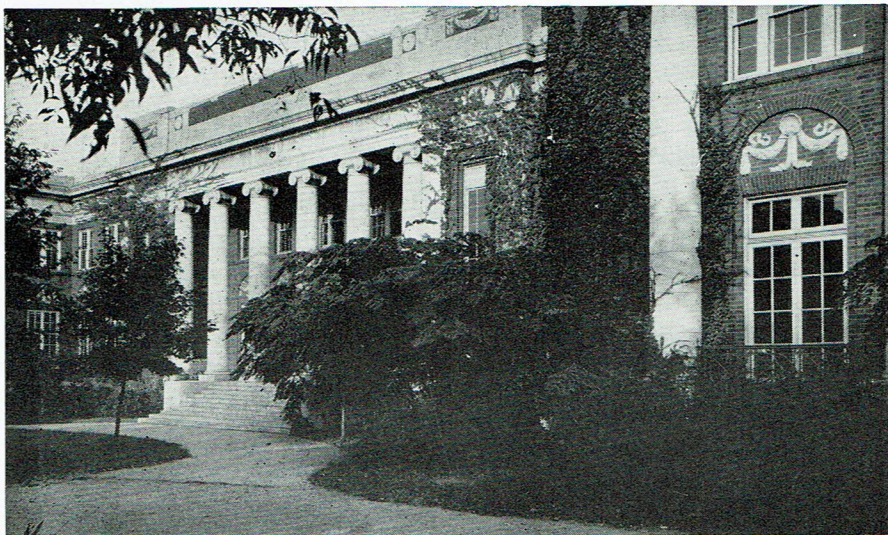
Our Company maintains a large stock of biological materials of all kinds. We have grown steadily during the thirty-one years we have been in business. It is our belief that this growth has been due to our considering an order for our supplies a privilege and to the fact that our materials are the finest which can be obtained.

**CAROLINA BIOLOGICAL SUPPLY COMPANY**  
Elon College, North Carolina

# A SCIENCE CURRICULUM

**Especially Arranged For Preparing Teachers of Science**

The prospective teacher may get a minimum of three years in one science (Biology or Chemistry), two years in a second science, and one year in the third science, with the courses in Psychology and Education required for a teaching certificate, including practice



teaching in science. Graduate work through the master's degree given in biology and chemistry in order to prepare teachers for the larger high schools or for teaching positions in small colleges.

*Write for catalogue mentioning the field of your interest to*

THE SECRETARY  
**GEORGE PEABODY COLLEGE  
FOR TEACHERS**

NASHVILLE 5, TENNESSEE

# JOURNAL OF THE Tennessee Academy of Science

## EDITORIAL STAFF

JESSE M. SHAVER, *Editor Emeritus*, George Peabody College for Teachers,  
Nashville

HELEN L. WARD, *Editor*, University of Tennessee, Knoxville

JAMES T. TANNER, *Zoology Editor*, University of Tennessee, Knoxville

E. D. EAVES, *Mathematics Editor*, University of Tennessee, Knoxville

JAMES C. BROWN, *Engineering Editor*, Tennessee Polytechnic Institute,  
Cookeville

CARL M. HILL, *Chemistry Editor*, Tennessee A and I College, Nashville

SARALUE WOOD, *Physics-Astronomy Editor*, Austin Peay State College,  
Clarksville

W. B. JEWELL, *Geology-Geography Editor*, Vanderbilt University, Nashville

JOHN T. JOHNSON, *High School Editor*, Young High School, Knoxville

FRANK BARCLAY, *Botany Editor*, East Tennessee State College, Johnson City

---

Entered as second class matter at the post office at Knoxville, Tennessee, under Act of August 24, 1912, acceptance of mailing at special rate of postage provided for in Section 1103, Act of October 3, 1917, and authorized September 16, 1931.

Published quarterly, in January, April, July, and October, by the Tennessee Academy of Science at Knoxville, Tennessee.

The Journal is sent to all members not in arrears for dues. The subscription price is \$4.00 a year, invariably in advance. Single copies \$1.00.

All articles and communications for publication, books, and publications for review, should be addressed to the Editor.

New subscriptions, changes of address, and applications for membership should be addressed to the Secretary. Personal items, news of events in the scientific world, and other notes suitable for our "News of Tennessee Science" department should be addressed to the Editor.

---

## THE TENNESSEE ACADEMY OF SCIENCE

(Founded 1912, at Nashville, Tennessee)

Affiliated with the American Association for the Advancement of Science

### AFFILIATED SOCIETIES

Tennessee Ornithological Society, Nashville, Tennessee

Barnard Astronomical Club, Nashville

Tennessee Science Teachers Association

Tennessee Psychological Association

### OFFICERS

CHRISTOPHER P. KEIM, *President*, Oak Ridge National Laboratory, Oak Ridge

J. GORDON CARLSON, *President-Elect*, University of Tennessee, Knoxville

JESSE M. SHAVER, *Editor Emeritus*, George Peabody College for Teachers,  
Nashville

HELEN L. WARD, *Editor*, University of Tennessee, Knoxville

JAMES L. WILSON, *Secretary*, Belmont College, Nashville

G. H. LUNDBERG, *Treasurer*, Vanderbilt University, Nashville

### EXECUTIVE COMMITTEE

CLINTON L. BAKER, Southwestern University, Memphis

J. GORDON CARLSON, University of Tennessee, Knoxville

C. S. CHADWICK, George Peabody College for Teachers, Nashville

C. P. KEIM, Oak Ridge National Laboratory, Oak Ridge

ROBERT T. LAGEMANN, Vanderbilt University, Nashville

G. H. LUNDBERG, Vanderbilt University, Nashville

ALVIN H. NIELSEN, University of Tennessee, Knoxville

G. B. PENNEBAKER, Tennessee Polytechnic Institute, Cookeville

HELEN L. WARD, University of Tennessee, Knoxville

JAMES L. WILSON, Belmont College, Nashville

YOU CAN DEPEND ON WARD'S  
FOR

**Professional Quality  
Reliable Service**

*Serving the Biological and  
Geological Sciences with*

**SPECIMENS                      EQUIPMENT  
TEACHING AIDS**

Living and Preserved Materials, Mineral Collections, Microscope Slides, Models, Biology and Geology Field and Laboratory Equipment, Color Slides for Both Sciences, Charts, Human and Animal Skeletons, Fossils, Bio-Plastic Mounts and Liquid Bio-Plastic.

*Write on your school letterhead for  
free catalog. Specify field of interest.*

**WARD'S NATURAL SCIENCE ESTABLISHMENT, Inc.  
P. O. Box 24, Beechwood Station, Rochester 9, N. Y.**

**LABORATORY SUPPLIES      ●      MICROSCOPES  
AND ACCESSORIES      ●      DISSECTING  
INSTRUMENTS      ●      CHEMICALS  
REAGENTS AND SOLUTIONS**

Distributors for Clay-Adams, Bausch & Lomb and  
other Importers and Manufacturers

**NASHVILLE SURGICAL  
SUPPLY COMPANY**

**1911 Church Street  
NASHVILLE 3, TENNESSEE**