

JOURNAL  
OF THE  
Tennessee Academy of Science

VOLUME VII, NUMBER 3

CONTENTS

	PAGE
THE EFFECT OF CERTAIN DIETS ON THE TEETH OF THE ALBINO RAT WITH SPECIAL REFERENCE TO THE DEVELOPMENT OF DENTAL CARIES. PERRY A. WEBBER .....	141
THE DEVELOPMENT OF INTEREST IN IRIS IN THE UNITED STATES. CLARENCE P. CONNELL .....	163
EVALUATION OF PUBLIC HEALTH PROCEDURES. ELBRIDGE SIBLEY .....	176
SPRING MEETING OF THE TENNESSEE ACADEMY OF SCIENCE. Report of the Secretary .....	186
NEW PUBLICATIONS ON OUR SHELVES. JESSE M. SHAVER	188
WHAT THE TENNESSEE ACADEMY OF SCIENCE IS DOING FOR BIRD STUDENTS. JESSE M. SHAVER .....	202
TEMPERATURE AND RELATIVE HUMIDITY IN RELATION TO THE ENDING OF THE EVENING SONG OF BIRDS. PAUL R. ELLIOTT .....	204
DISTRIBUTION OF ENERGY RADIATED FROM BROADCASTING STATIONS. C. R. FOUNTAIN .....	214

JULY, 1932

# JOURNAL

of the

## Tennessee Academy of Science

### EDITORIAL STAFF

JESSE M. SHAVER, *Editor*, George Peabody College for Teachers, Nashville.  
HARRY MONK, *Ornithology Editor*, Ovoca Apts., Nashville.

### ASSISTANT EDITORS

WM. LITTERER, Nashville	WYMAN R. GREEN, Chattanooga
H. M. JENNISON, Knoxville	LATIMER WILSON, Nashville
A. R. BLISS, JR., Memphis	J. MONTGOMERY FARRAR, Nashville

---

---

Entered as second-class matter February 12, 1926, at the postoffice at Nashville, Tennessee, under Act of August 24, 1912, acceptance of mailing at special rate of postage provided for in Section 1103, Act of October 3, 1917, and authorized September 16, 1931.

Published quarterly, in January, April, July and October, by the Tennessee Academy of Science at Nashville, Tennessee.

The Journal is sent to all members not in arrears for dues. The subscription price is \$2.00 a year, invariably in advance. Single copies 50c. One dollar from the \$2.00 dues of each member is for a subscription to THE JOURNAL OF THE TENNESSEE ACADEMY OF SCIENCE.

All articles and communications for publication, books and publications for review should be addressed to the Editor.

New subscriptions, changes of address, and applications for membership should be addressed to the Secretary. Personal items, news of events in the scientific world, and other notes suitable for our "Notes Here and There" department may be addressed to the Editor.

---

---

## THE TENNESSEE ACADEMY OF SCIENCE

(FOUNDED, 1912, AT NASHVILLE, TENNESSEE)

Affiliated with the American Association for the Advancement of Science

### OFFICERS

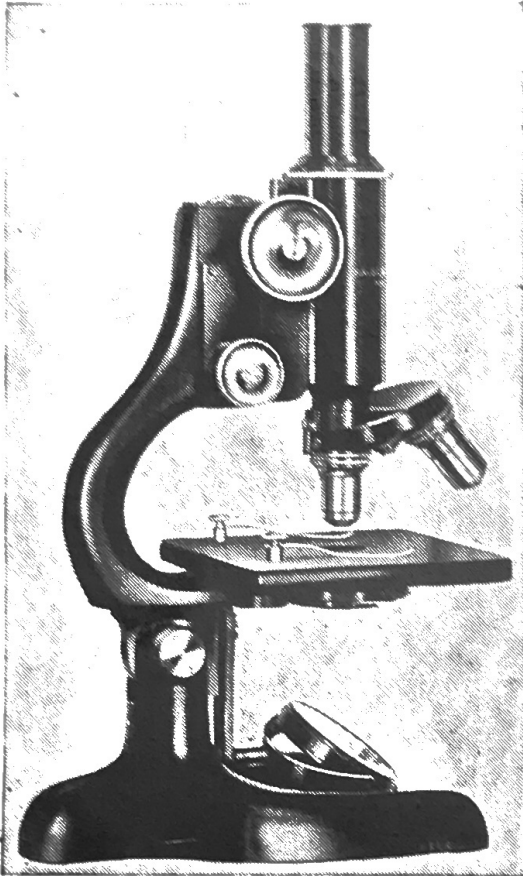
A. R. BLISS, JR., *President*, University of Tennessee, Memphis.  
LOUIS BIRCHER, *Vice-President*, Vanderbilt University.  
JESSE M. SHAVER, *Editor*, George Peabody College for Teachers, Nashville.  
J. T. MCGILL, *Secretary-Treasurer*, Vanderbilt University, Nashville.  
MISS ELEANOR EGGLESTON, *Librarian*, Vanderbilt University, Nashville.

---

---

The Tennessee Academy of Science is very anxious to include in its membership all teachers and professors of science, research workers in science both in educational institutions and industrial establishments, and all others who are interested in some phase of science. We invite you to join our organization and take part in our activities. The annual dues are: \$2.00 for members and \$10.00 for sustaining members. They may be sent direct with your application for membership to the secretary.

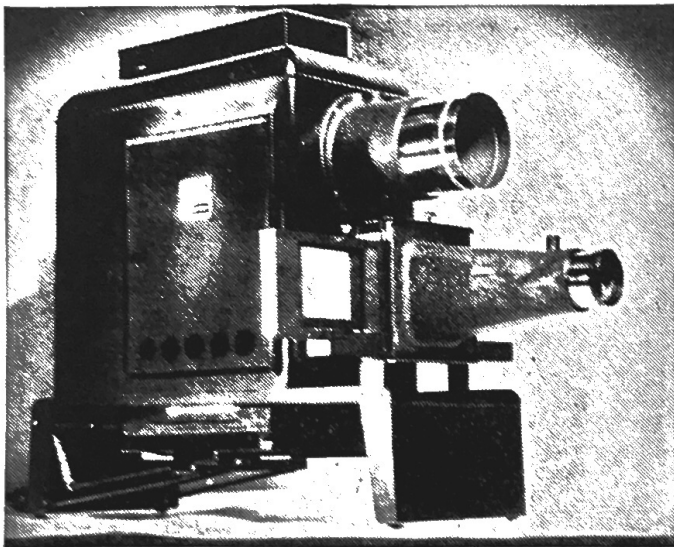
# For Those Who Realize That The Best Costs Less



WISE BUYERS, this year more than ever before, are turning to quality apparatus for extra service under the heavy, exacting requirements of the classroom and laboratory. B & L products are never cheapened with inferior materials—quality is maintained at all costs.

The FS Microscope, for example, is the standard instrument in laboratories of secondary schools. Ruggedly built to stand all sorts of hard knocks from inexperienced students, yet so finely made that it easily meets the requirements of advanced students. A wide range of accessories are available.

The LRM Balopticon makes visual instruction thoroughly practical in classrooms or lecture halls for all subjects. By virtue of its structural ruggedness and operating simplicity it can be so quickly set up and so efficiently run as to conserve both teaching time and effort. Projects either slides or opaque objects.



*Send Coupon for  
Complete Details*

## BAUSCH & LOMB OPTICAL CO.

657 ST. PAUL STREET

ROCHESTER, N. Y.

Please send me complete details:  FS Microscope  LRM Balopticon

Name .....

Address .....

City ..... State .....

# *Turtox News*

*Mailed every month without charge to over twenty thousand biology teachers.*

Turtox News is an eight-page monthly publication devoted to notes of special interest to the biology teacher and to announcements of new teaching aids developed in the Turtox Laboratories. Every issue contains at least one article, and usually several, discussing subjects of a biological nature. The notes and articles cover a wide range of subjects including ecology, pedagogy, nature study, travel, laboratory methods, etc.

Some recent numbers of Turtox News include the following articles:

The Collecting and Preserving of Some of the More Common Mosses.

Practical Suggestions for Histological Technique.

Earth, an Album of Pressed Forests.

The Significance of Variation in Blood Cell Size among Animals.

Turtox News is also used by research workers and others as a medium through which they may locate sources for rare specimens.

*If you are not receiving Turtox News, write to us asking us to place your name on the mailing list.*



*The sign of the Turtox pledges absolute satisfaction*

**GENERAL BIOLOGICAL SUPPLY HOUSE**

*Incorporated*

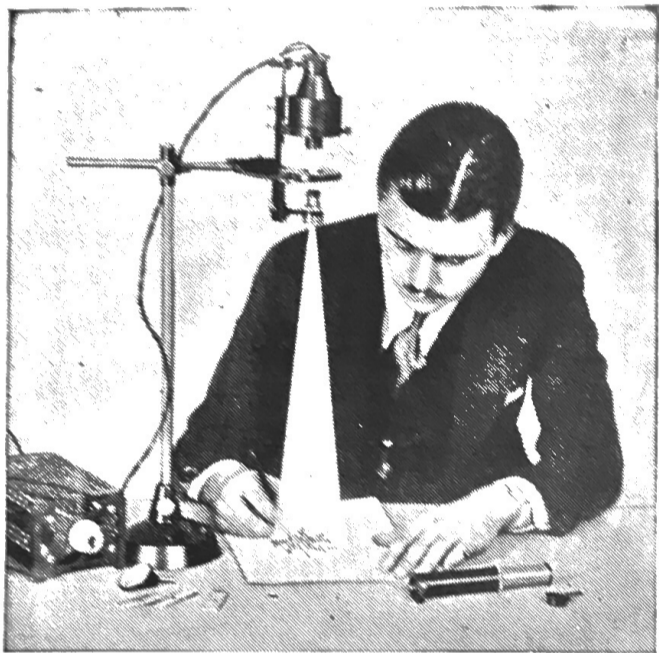
**761-763 EAST SIXTY-NINTH PLACE  
CHICAGO**

# PROMI and PROMAR

## Microscopic Projection and Drawing Apparatus

*"It Saved Us the Cost of Five Microscopes"*

Quoting remark of a Department Head



The Promi projects microscopic slides and living organisms and insects on table or wall for drawing and demonstration. Also used as a microscope and a micro-photographic apparatus.

The Promi, recently perfected by a prominent German microscope works, is an ingenious yet simple, inexpensive apparatus which fills a long-felt want in scientific instruction and research in Bacteriology, Botany, Zoology, Pathology, Anatomy, Embryology, Histology, Chemistry, etc.

It has been endorsed by many leading scientists and instructors.

PRICE: F. O. B. New York, \$100.00. Complete apparatus in polished wood carrying case. Includes extra bulb, rheostat for 110 and 220 volts with cords, plugs and switch for both DC and AC current, 11x objective, tube with 5x ocular, reflecting mirror and micro-cuvette. Extra equipment prices on request.

Prospectus Gladly Sent

## THE PROMAR MICROSCOPIC PROJECTION AND DRAWING APPARATUS

A new instrument which has been brought out in response to a demand for a simple apparatus like the Promi for more advanced work which requires more powerful illumination and higher magnification. Has many additional features as standard equipment.



Prices and Prospectus Gladly Sent on Request

# CLAY-ADAMS COMPANY

117-119 East 24th Street

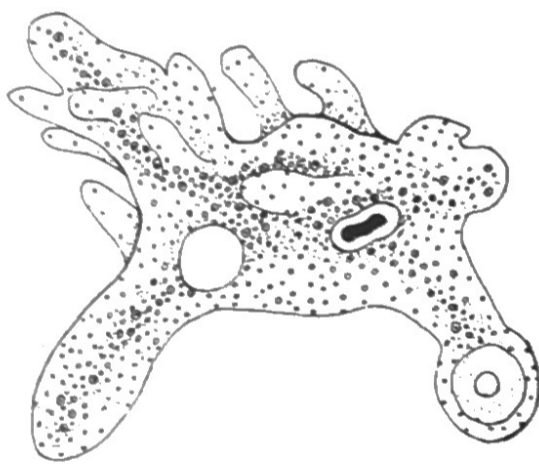
New York, N. Y.

Laboratory Supplies ♦ Microscopes  
and Accessories ♦ Dissecting In-  
struments ♦ Chemicals ♦ Reagents  
and Solutions

*Distributors for Clay-Adams, Bausch & Lomb, and  
other Importers and Manufacturers*

## NASHVILLE SURGICAL SUPPLY COMPANY

FOURTH AVENUE AND CHURCH  
NASHVILLE, TENN.



*Amoeba proteus*

*In our cultures Biologists have recognized both a superior  
grade of material and a thoroughly dependable service.*

### Living and Preserved Materials of the Highest Quality

Teachers of Tennessee and neighboring states will readily ap-  
preciate the expeditious handling which we can give their  
orders.

*Catalogue Sent on Request*

CAROLINA BIOLOGICAL SUPPLY COMPANY  
ELON COLLEGE, N. C.